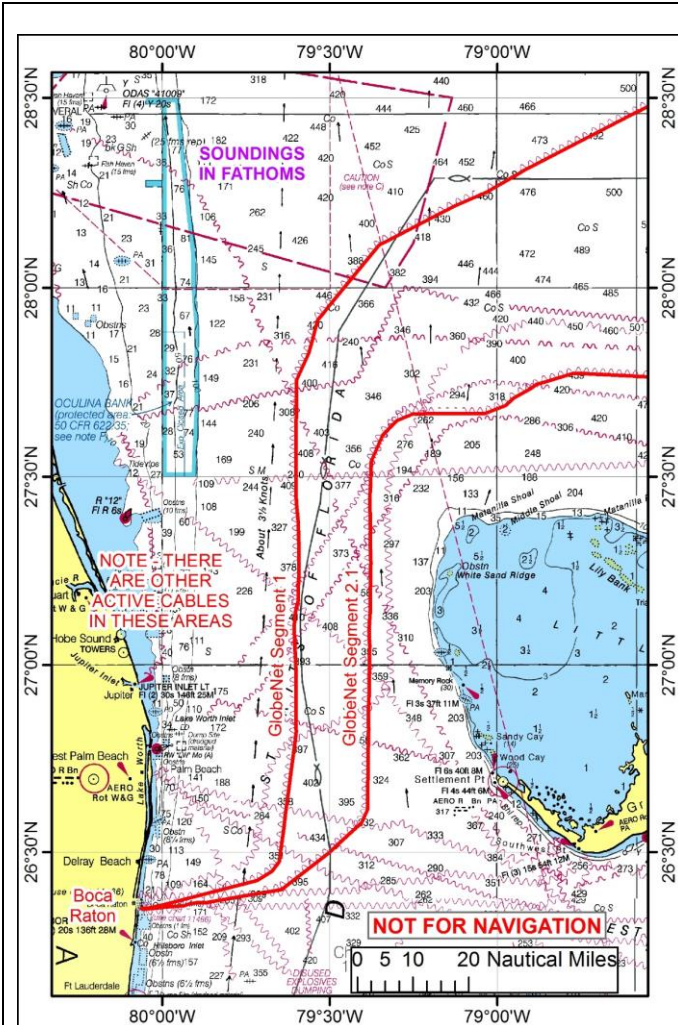


# GlobeNet Submarine Cables in Florida



## Attention Mariners:

GlobeNet subsea cables carry international communications between the USA, Brazil, Bermuda, Colombia and Venezuela. Cables carry more than 95% of international communications, with more capacity, speed, and security than satellites, but they may be damaged by anchors, fishing gear and other seabed activities.

The approximate routes of Segments 1 and 2.1 in Florida are shown on the attached sketch and position list. Cables are essential to regional and global communication. They are protected by international law. Due to possible uncertainty in locations of marine operations, we ask mariners to keep anchors, grapnels, fishing gear & other items that contact the seabed at least 1/2 mile away.

If your gear snags something that may be the cable, please do not try to lift it. That could cause risks to the vessel, crew and cable. Weight and tension of the cable could affect vessel stability, and cables carry up to 12,000 volts of electrical current. It may be necessary to sacrifice your gear.

If a person damages a cable intentionally or by culpable negligence, such damage is illegal and the responsible person may be liable for expensive repair costs.

In case of a suspected snag on this cable call:

**561-750-2488**

For more information contact:

Globenet Tuckerton Cable Station :

609-294-8661

[clstuckerton@globenet.net](mailto:clstuckerton@globenet.net)

or

**Sea Risk Solutions LLC**

New Jersey, USA

Tel: +1 908 339 7439 / Fax: +1 908 462 8200

[info@searisksolutions.com](mailto:info@searisksolutions.com)

[sdrew@searisksolutions.com](mailto:sdrew@searisksolutions.com)

[www.searisksolutions.com](http://www.searisksolutions.com)

<b>GlobeNet Segment 1 - WGS-84</b>		
Latitude	Longitude	Depth (ft)
N 26 20.96	W 80 3.702	49
N 26 20.96	W 80 3.6349	56
N 26 20.96	W 80 3.581	66
N 26 20.959	W 80 3.41	62
N 26 20.964	W 80 3.271	82
N 26 20.9601	W 80 3.0881	115
N 26 21.048	W 80 3.068	125
N 26 20.9553	W 80 3.0428	131
N 26 20.954	W 80 3.001	148
N 26 21.3535	W 80 0.7964	541
N 26 21.404	W 80 0.518	574
N 26 21.451	W 80 0.28	597
N 26 21.495	W 79 59.997	623
N 26 23.6955	W 79 50.5712	1224
N 26 23.943	W 79 49.511	1319
N 26 24.185	W 79 48.546	1427
N 26 25.465	W 79 42.995	1831
N 26 26.917	W 79 40.304	2067
N 26 28.498	W 79 38.986	2185
N 26 30.327	W 79 38.737	2198
N 26 33.64	W 79 38.256	2182
N 26 36.671	W 79 37.83	2169
N 26 38.264	W 79 37.596	2175
N 26 38.492	W 79 37.559	2175
N 26 39.926	W 79 37.349	2188
N 26 41.39	W 79 37.135	2218
N 26 47.5015	W 79 36.2612	2320
N 26 49.299	W 79 36.004	2356
N 26 50.935	W 79 36.011	2306
N 26 54.5233	W 79 36.0202	2320
N 26 59.467	W 79 36.033	2306
N 27 3.197	W 79 36.231	2395
N 27 5.999	W 79 36.379	2448
N 27 8.193	W 79 36.139	2454
N 27 8.77	W 79 36.028	2457
N 27 9.0787	W 79 35.9425	2470
N 27 10.166	W 79 35.66	2470
N 27 12	W 79 35.662	2480
N 27 13.745	W 79 35.543	2431
N 27 14	W 79 35.515	2461
N 27 14.179	W 79 35.52	2461
N 27 17.606	W 79 35.501	2418
N 27 19.497	W 79 35.511	2428
N 27 22.997	W 79 35.624	2395
N 27 25.947	W 79 35.998	2490
N 27 29.763	W 79 36.012	2438
N 27 32.848	W 79 36.007	2418
N 27 33.314	W 79 36.007	2497
N 27 40.03	W 79 36.002	2575

<b>GlobeNet Segment 1 - continued</b>		
N 27 43.825	W 79 35.997	2388
N 27 44.057	W 79 35.997	2533
N 27 45.272	W 79 35.996	2618
N 27 49.52	W 79 33.795	2585
N 27 50.472	W 79 33.486	2651
N 27 51.542	W 79 33.158	2631
N 27 54.855	W 79 32.143	2690
N 27 56.205	W 79 30.892	2592
N 27 56.882	W 79 30.263	2562
N 28 6.737	W 79 21.134	2379
N 28 8.304	W 79 17.6895	2467
N 28 8.347	W 79 17.595	2467
N 28 11.491	W 79 10.682	2710
N 28 12.938	W 79 7.482	2772
N 28 15.24	W 79 1.562	2795
N 28 15.607	W 79 0.849	2766
N 28 17.1667	W 78 57.8159	2822
N 28 17.469	W 78 57.228	2831
N 28 17.512	W 78 57.142	2831
N 28 18.613	W 78 55.001	2848
N 28 18.9665	W 78 54.2185	2851
N 28 27.7444	W 78 34.8948	3038

<b>GlobeNet Segment 2.1 – WGS-84</b>		
Latitude	Longitude	Depth (ft)
N26 20.9360	W080 03.7080	56
N26 20.9240	W080 03.5670	66
N26 20.9010	W080 03.3970	121
N26 20.8880	W080 03.2390	144
N26 20.8720	W080 02.9990	177
N26 21.1230	W079 59.9990	620
N26 21.1340	W079 59.7870	640
N26 21.3630	W079 56.1020	801
N26 21.6680	W079 55.2110	830
N26 21.9280	W079 53.6480	984
N26 21.9390	W079 52.0900	1109
N26 21.9380	W079 52.0090	1115
N26 24.0020	W079 38.6000	2234
N26 29.9990	W079 29.9990	2520
Estimated Exit US EEZ		