

Attention Mariners and Fishermen

Subsea cables carry over 95% of international communications, with more capacity, speed, and security than satellites, but may be damaged by anchors, fishing gear and other seabed activities. Cables are essential to regional and global communication and are protected by international law.

The approximate routes of Segments 4 and 5 in Bermuda are shown on the attached sketch and position list. Due to possible uncertainty in locations of marine operations, GlobeNet asks anyone involved in subsea projects to keep any equipment or operations that contact the seabed at least ½ nautical mile (900 meters) away from the cables to avoid damage.

If your gear snags something that may be the cable, please do not try to lift it. That could cause risks to the vessel, crew and cable. The weight and tension of the cable could affect vessel stability, and cables carry up to 12,000 Volts of electrical current. It may be necessary to sacrifice your gear. Any action that could damage a subsea cable, intentionally or by negligence, is illegal. Those responsible for such actions are liable for expensive repair costs.

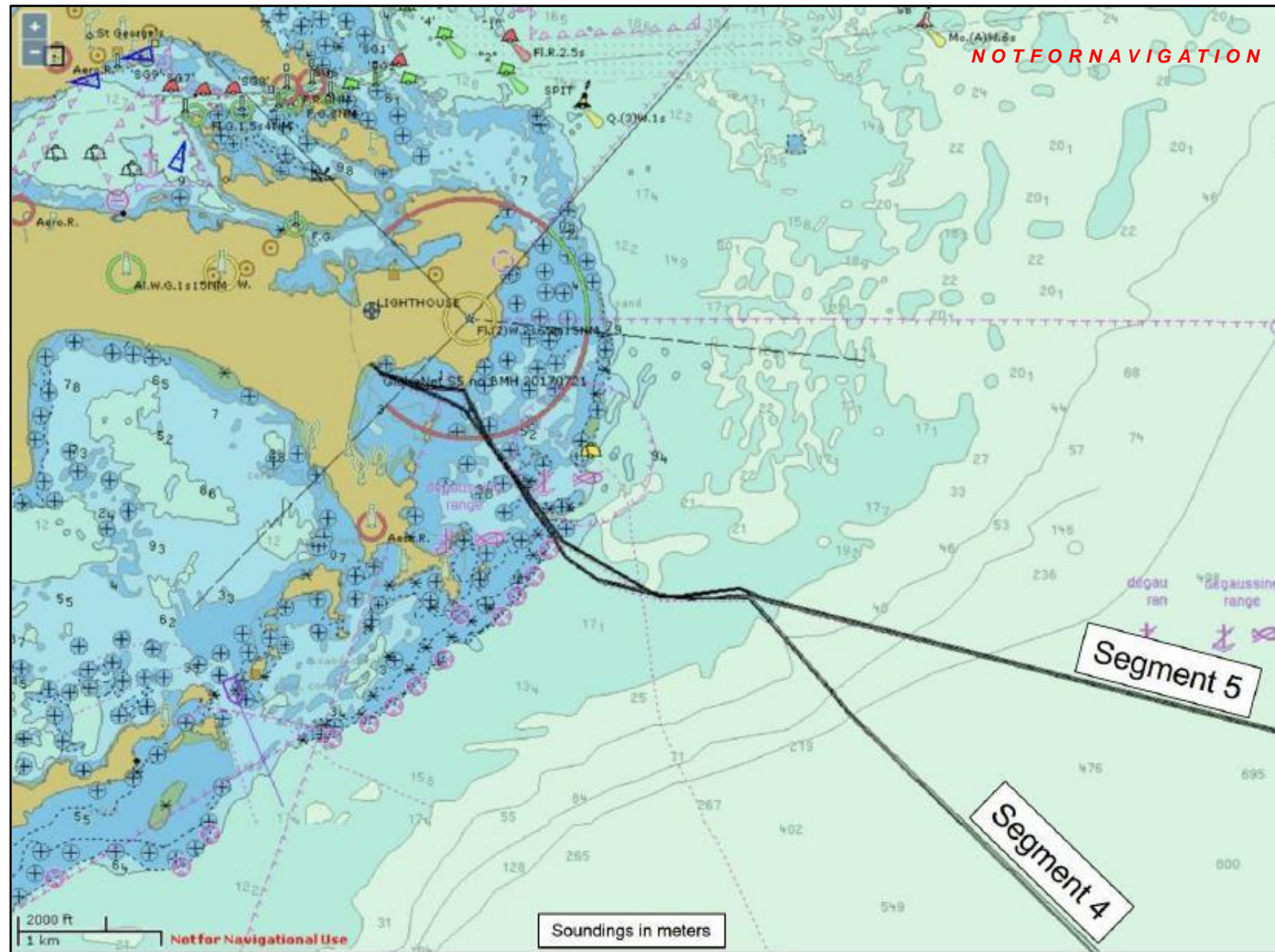
For more information, contact:



Tel: +1.441.294.6555
noc@globenet.net
www.globenet.net



Tel: +1 908 339 7439
Fax: +1 908 462 8200
info@searisksolutions.com
www.searisksolutions.com



GlobeNet Segment 4 - WGS84				
Latitude N		Longitude W		Depth
Deg	Min	Deg	Min	m
32	21.6652	064	39.5358	0
32	21.6241	064	39.4874	3
32	21.6102	064	39.4340	4
32	21.5985	064	39.3960	4
32	21.5862	064	39.3653	4
32	21.5692	064	39.3067	3
32	21.5444	064	39.2363	4
32	21.5352	064	39.2102	4
32	21.5195	064	39.1777	4
32	21.4950	064	39.1185	3
32	21.4795	064	39.1050	4
32	21.4520	064	39.0816	5
32	21.4432	064	39.0740	3
32	21.4191	064	39.0534	5
32	21.4153	064	39.0501	5
32	21.2227	064	38.8850	6
32	21.2000	064	38.8694	4
32	21.1397	064	38.8280	3
32	21.0346	064	38.7346	21
32	20.9397	064	38.6677	12
32	20.8502	064	38.5180	12
32	20.8500	064	38.5117	12
32	20.8328	064	38.4310	12
32	20.8139	064	38.3425	15
32	20.7965	064	38.2631	19
32	20.7935	064	38.2495	19
32	20.7900	064	38.2060	15
32	20.7848	064	38.1507	15
32	20.7850	064	38.1445	15
32	20.7825	064	38.0872	16
32	20.7832	064	38.0807	16
32	20.7835	064	38.0362	16
32	20.7825	064	38.0027	16
32	20.7902	064	37.9337	16
32	20.7890	064	37.9217	15
32	20.7872	064	37.8480	18
32	20.4390	064	37.4840	135
32	20.4090	064	37.4550	175
32	20.3500	064	37.4000	260
32	19.1750	064	35.9735	1017
32	19.1366	064	35.9048	1035
32	18.7110	064	35.0210	1260
32	18.6420	064	34.9450	1296
32	18.2140	064	34.4710	1515
32	18.1010	064	34.3410	1531
32	17.5670	064	33.7520	1741
32	17.5120	064	33.5390	1744
32	16.7810	064	30.7510	2287

GlobeNet Segment 5 - WGS84				
Latitude N		Longitude W		Depth
Deg	Min	Deg	Min	m
32	21.6300	64	39.4900	2
32	21.5800	64	39.2900	2
32	21.5700	64	39.1200	4
32	21.3800	64	39.0100	5
32	21.0000	64	38.6800	23
32	20.7900	64	38.2500	22
32	20.7900	64	38.1500	22
32	20.8200	64	37.8900	20
32	20.7800	64	37.7800	20
32	19.9700	64	34.0500	1122
32	19.6600	64	32.6600	1310
32	18.6668	64	28.2393	2340
32	18.4555	64	27.2023	2435
32	18.4286	64	27.0703	2475
32	18.3690	64	26.3207	2605
32	18.3675	64	26.2861	2612
32	18.3598	64	25.3629	2839
32	18.3470	64	24.1364	3092



Tel: +1.441.294.6555

noc@globenet.net

www.globenet.net



New Jersey 08829 USA

Tel: +1 908 339 7439

Fax: +1 908 462 8200

info@searisksolutions.com

www.searisksolutions.com

All positions are in WGS84, Degrees, Decimal Minutes