

## Atenção Marinheiros e Pescadores

Cabos submarinos da Claro transportam tráfego de telecomunicação importante, incluindo internet, telefonia e outros. Os cabos submarinos transportam mais de 95% das comunicações internacionais, proporcionando mais capacidade, velocidade e segurança em comparação à transmissão via satélite, mas em contra partida, eles podem ser danificados por âncoras, redes de pesca e outras atividades no fundo do mar.

As rotas aproximadas dos cabos estão apresentadas na lista anexa. Os cabos são essenciais para as comunicações regionais e globais. Eles são protegidos pelas leis internacionais. Devido a incerteza da correta localização das operações marítimas e pesqueiras, é solicitado aos marinheiros e pescadores para manterem as âncoras, as redes e outros equipamentos que tenham contato com o fundo do mar, de no mínimo 0.6 Km ou 1/2 milha náutica de distância dos cabos submarinos.

Se a sua âncora ou rede de pesca prender em algo que possa ser um cabo, por favor, não tente levá-lo, pois isto pode causar sérios riscos à embarcação, à tripulação e ao cabo. O peso e a tensão do cabo podem afetar seriamente a estabilidade do barco. Os cabos submarinos carregam até 12 mil volts de eletricidade. Poderá precisar sacrificar a sua âncora ou o equipamento de pesca.

Se uma pessoa danificar um cabo intencionalmente ou por negligência, este ato é considerado ilegal e a pessoa poderá ser responsabilizada pelos altos custos de reparo.

Para maiores informações consulte Claro- Brasil ou Sea Risk Solutions.

Tel: 0800 704 0041  
Tel: 0800 704 4617

**Claro-Brasil**

Tel: +55 21 2121 2493  
Tel: +55 21 2121 9393

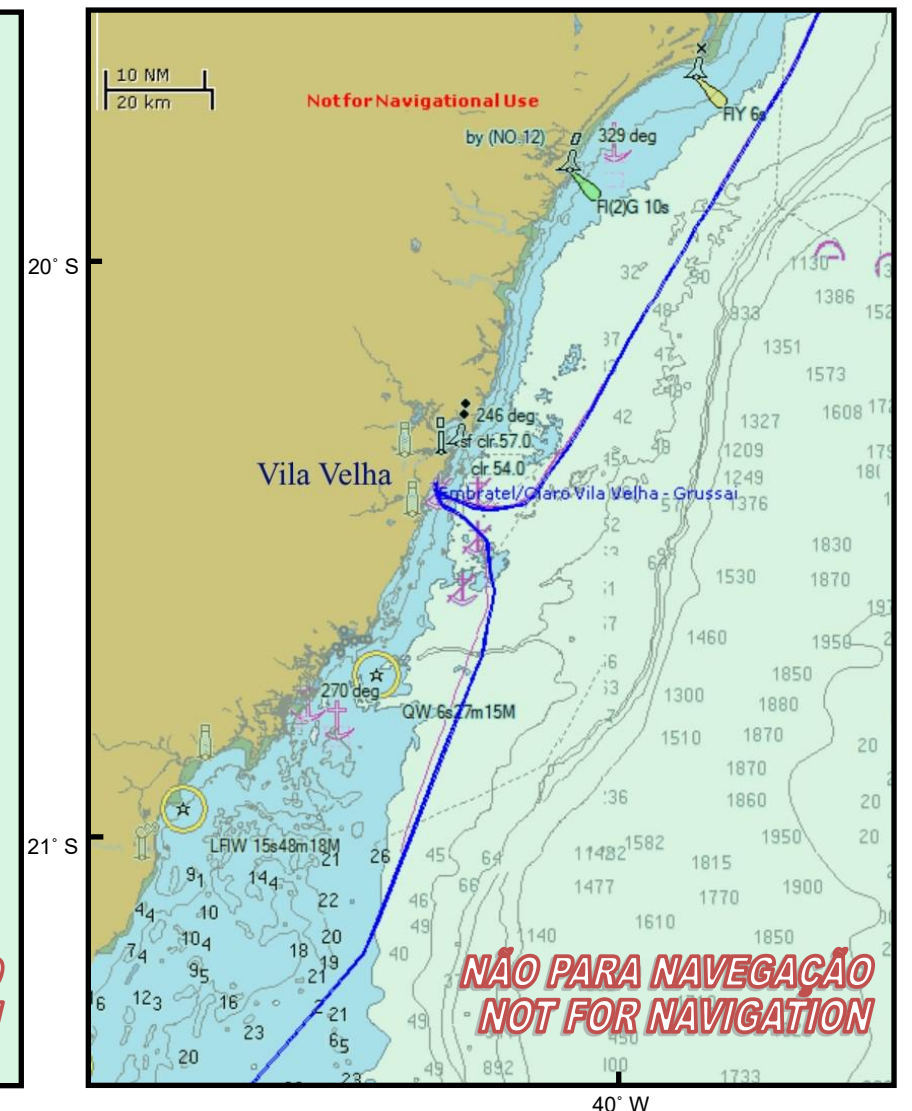
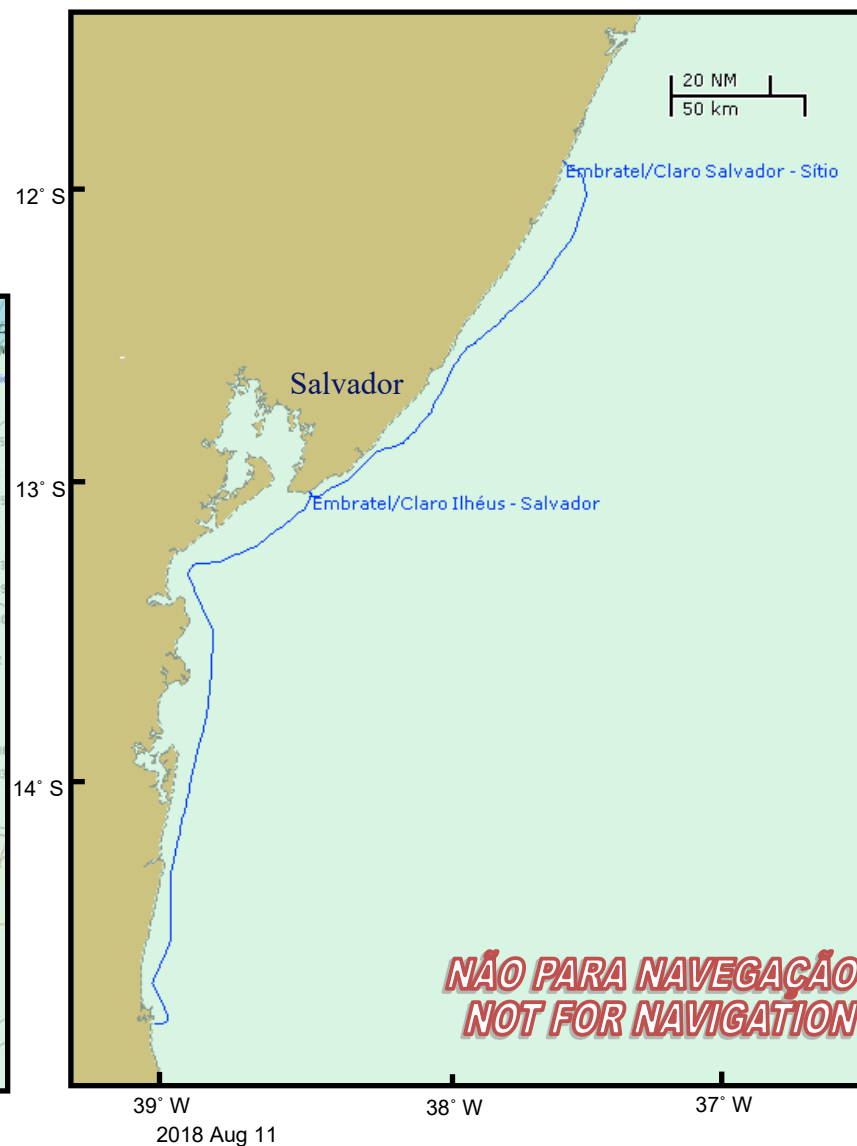
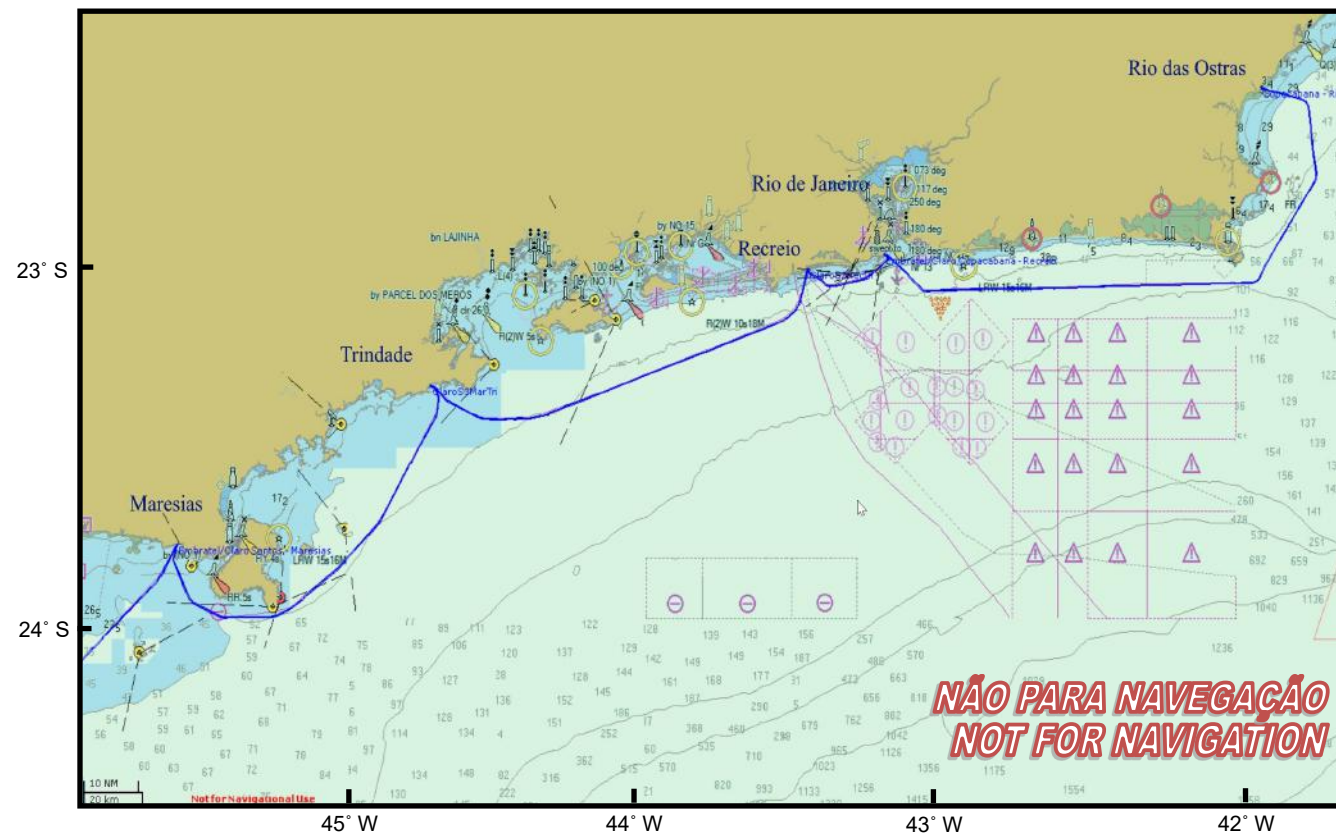


Email: cntx@embratel.com.br  
Email: noctxrj@embratel.com.br

**Sea Risk Solutions LLC**  
New Jersey 08829 USA

Tel: +1 908 339 7439  
Fax: +1 908 462 8200

Email: info@searisksolutions.com  
[www.searisksolutions.com](http://www.searisksolutions.com)



## Attention Mariners and Fishermen

Claro subsea cables carry important communications, including internet, telephones, and other. Cables carry more than 95% of international communications, with more capacity, speed, and security than satellites, but they may be damaged by anchors, fishing gear, and other seabed activities.

The approximate route of these cables is shown on the attached sketch and position list. Cables are essential to regional and global communications. They are protected by international law. Due to possible uncertainty in locations of marine operations, we ask mariners to keep anchors, fishing gear, and other items connected to the seabed at least 1/2 mile away.

If your gear snags something that may be a cable, please do not try to lift it. That could cause risks to the vessel, crew, and cable. Weight and tension of the cable could affect vessel stability and cables carry up to 12,000 volts of electrical current. It may be necessary to sacrifice your gear.

If a person damages a cable intentionally or by culpable negligence, such damage is illegal and the responsible person may be liable for expensive repair costs.

For more information, contact Claro- Brasil or Sea Risk Solutions.

## Cabos submarinos Claro no Brasil — Claro Submarine Cables in Brazil

Lat S	Lon W	Depth m	Lat S	Lon W	Depth m	Lat S	Lon W	Depth m	Lat S	Lon W	Depth m	Lat S	Lon W	Depth m	Lat S	Lon W	Depth m	Lat S	Lon W	Depth m	Lat S	Lon W	Depth m			
Claro Segment 1N - WGS84			22° 59.371' 43° 10.465' 17			23° 26.049' 44° 03.972' 47			Claro Segment 4S - WGS84			Claro Segment 4N - WGS84			14° 45.627' 38° 59.077' 31			13° 15.942' 38° 52.778' 21			12° 51.060' 38° 9.126' 43			12° 28.060' 37° 50.798' 42		
Copacabana - Rio das Ostras			22° 59.454' 43° 10.480' 18			23° 25.896' 44° 03.196' 47			Maresias - Santos			Vila Velha - Sao Mateus			14° 41.901' 39° 1.046' 27			13° 15.726' 38° 52.485' 21			12° 50.878' 38° 8.745' 43			12° 26.270' 37° 48.443' 46		
22° 59.022' 43° 10.711' 14			22° 59.500' 43° 10.497' 19			23° 25.523' 44° 03.347' 48			24° 0.474' 46° 22.269' 10			20° 22.758' 40° 18.158' 8			14° 41.415' 39° 1.130' 26			13° 15.610' 38° 52.177' 21			12° 50.715' 38° 8.194' 43			12° 26.047' 37° 48.205' 45		
23° 0.035' 43° 9.456' 26			22° 59.668' 43° 10.609' 19			23° 24.940' 44° 03.697' 47			24° 1.424' 46° 22.619' 11			20° 23.092' 40° 18.233' 12			14° 40.976' 39° 1.061' 28			13° 15.468' 38° 51.545' 21			12° 50.608' 38° 8.023' 41			12° 25.394' 37° 47.710' 43		
23° 0.835' 43° 8.418' 25			23° 0.548' 43° 11.646' 15			23° 23.420' 44° 04.051' 35			24° 3.267' 46° 24.134' 16			20° 23.276' 40° 18.119' 15			14° 39.819' 39° 0.641' 34			13° 15.501' 38° 50.982' 28			12° 50.079' 38° 7.749' 42			12° 25.323' 37° 47.630' 42		
23° 0.877' 43° 8.197' 25			23° 2.726' 43° 14.712' 37			23° 21.804' 44° 04.1808' 21			24° 5.924' 46° 26.319' 18			20° 23.958' 40° 16.791' 24			14° 38.131' 38° 59.719' 38			13° 15.441' 38° 50.030' 33			12° 49.968' 38° 7.644' 43			12° 24.667' 37° 46.902' 44		
23° 1.038' 43° 8.045' 25			23° 2.871' 43° 14.974' 38			23° 21.289' 44° 04.215' 12			24° 6.619' 46° 26.666' 18			20° 24.964' 40° 14.152' 30			14° 35.962' 38° 58.532' 31			13° 15.197' 38° 47.979' 40			12° 49.794' 38° 7.351' 43			12° 24.434' 37° 46.730' 41		
23° 2.120' 43° 6.715' 35			23° 2.944' 43° 15.171' 38			23° 21.180' 44° 04.2.553' 12			24° 6.782' 46° 26.735' 18			20° 24.982' 40° 14.070' 32			14° 35.315' 38° 58.382' 31			13° 15.236' 38° 47.653' 39			12° 49.669' 38° 7.238' 38			12° 22.466' 37° 44.388' 45		
23° 2.327' 43° 6.518' 35			23° 3.075' 43° 15.742' 39			23° 21.094' 44° 04.2.703' 9			24° 6.958' 46° 26.758' 19			20° 25.014' 40° 13.709' 30			14° 34.332' 38° 57.920' 32			13° 15.201' 38° 47.228' 39			12° 49.442' 38° 7.122' 39			12° 20.137' 37° 41.666' 45		
23° 2.434' 43° 6.411' 38			23° 4.054' 43° 20.453' 43			23° 21.035' 44° 04.2.816' 8			24° 7.247' 46° 26.719' 19			20° 25.109' 40° 12.814' 35			14° 33.883' 38° 57.589' 34			13° 14.741' 38° 46.152' 41			12° 48.761' 38° 6.497' 41			12° 18.816' 37° 40.491' 35		
23° 4.711' 43° 3.808' 50			23° 4.148' 43° 21.150' 42			23° 21.000' 44° 04.2.919' 8			24° 7.583' 46° 26.606' 20			20° 25.100' 40° 12.771' 36			14° 33.294' 38° 57.482' 29			13° 14.464' 38° 45.598' 38			12° 48.452' 38° 6.039' 42			12° 18.314' 37° 39.995' 44		
23° 4.896' 43° 3.393' 52			23° 4.222' 43° 22.560' 42			23° 20.974' 44° 04.3.074' 8			24° 9.624' 46° 25.519' 27			20° 25.118' 40° 12.159' 35			14° 32.917' 38° 57.300' 35			13° 14.281' 38° 45.154' 41			12° 48.441' 38° 6.024' 42			12° 16.029' 37° 38.259' 39		
23° 4.991' 43° 2.829' 51			23° 4.197' 43° 22.869' 39			Claro Segment 3S - WGS84			24° 14.453' 46° 21.093' 33			20° 25.103' 40° 11.988' 38			14° 29.451' 38° 57.374' 35			13° 14.138' 38° 44.742' 38			12° 47.612' 38° 5.268' 37			12° 16.025' 37° 38.256' 39		
23° 4.968' 43° 1.221' 51			23° 4.142' 43° 23.035' 38			Maresias - Trindade			24° 15.625' 46° 19.911' 35			20° 25.134' 40° 11.892' 35			14° 28.365' 38° 57.296' 34			13° 13.680' 38° 43.646' 35			12° 46.623' 38° 4.471' 37			12° 15.345' 37° 37.889' 37		
23° 4.846' 42° 58.879' 51			23° 4.019' 43° 23.200' 37			23° 21.158' 44° 04.2.863' 9			24° 15.697' 46° 19.808' 35			20° 25.013' 40° 11.189' 40			14° 26.462' 38° 57.299' 34			13° 13.037' 38° 41.861' 39			12° 44.761' 38° 2.849' 39			12° 13.600' 37° 36.432' 39		
23° 4.618' 42° 49.262' 59			23° 3.673' 43° 23.510' 35			23° 21.208' 44° 04.2.774' 10			24° 15.768' 46° 19.658' 35			20° 24.964' 40° 10.942' 44			14° 26.252' 38° 57.295' 34			13° 12.868' 38° 41.518' 38			12° 44.634' 38° 2.641' 36			12° 13.535' 37° 36.384' 39		
23° 4.563' 42° 43.665' 62			23° 3.392' 43° 23.788' 33			23° 21.273' 44° 04.2.695' 11			24° 15.854' 46° 19.343' 35			20° 24.910' 40° 10.725' 45			14° 26.179' 38° 57.271' 34			13° 12.450' 38° 40.583' 32			12° 44.572' 38° 2.602' 33			12° 10.877' 37° 34.461' 38		
23° 4.578' 42° 42.539' 63			23° 3.297' 43° 23.929' 31			23° 21.633' 44° 04.2.365' 17			24° 15.870' 46° 19.024' 35			20° 24.846' 40° 10.156' 34			14° 22.398' 38° 57.299' 35			13° 12.322' 38° 40.220' 32			12° 44.091' 38° 2.368' 32			12° 9.243' 37° 33.267' 39		
23° 4.558' 42° 39.662' 64			23° 2.272' 43° 26.164' 30			23° 21.983' 44° 04.2.095' 24			24° 15.853' 46° 13.860' 37			20° 24.670' 40° 9.485' 39			14° 19.685' 38° 57.414' 38			13° 11.615' 38° 38.797' 33			12° 42.206' 38° 1.436' 31			12° 8.011' 37° 32.493' 41		
23° 4.518' 42° 37.320' 65			23° 2.173' 43° 26.313' 29			23° 22.577' 44° 04.1.792' 31			24° 15.811' 46° 4.941' 44			20° 24.602' 40° 8.895' 39			14° 19.147' 38° 57.413' 37			13° 10.040' 38° 36.723' 38			12° 40.695' 38° 0.607' 33			12° 6.827' 37° 31.973' 35		
23° 4.538' 42° 37.048' 64			23° 2.023' 43° 26.427' 27			23° 22.803' 44° 04.1.743' 33			24° 15.797' 46° 4.769' 44			20° 24.282' 40° 8.266' 39			14° 14.803' 38° 56.405' 40			13° 10.040' 38° 36.723' 38			12° 37.514' 37° 58.998' 35			12° 5.275' 37° 31.674' 36		
23° 4.535' 42° 37.014' 64			Claro Segment 2S - WGS84			23° 23.123' 44° 04.1.715' 35			24° 15.769' 46° 4.632' 44			20° 23.755' 40° 7.759' 39			14° 11.640' 38° 55.770' 39			13° 10.014' 38° 36.687' 38			12° 37.514' 37° 58.998' 35			12° 5.275' 37° 31.674' 36		
23° 4.503' 42° 36.744' 64			Recreio - Trindade			23° 23.391' 44° 04.2.014' 41			24° 15.688' 46° 4.413' 44			20° 23.774' 40° 7.778' 39			14° 11.122' 38° 55.433' 40			13° 8.590' 38° 34.776' 40			12° 37.411' 37° 58.934' 35			12° 5.275' 37° 31.674' 36		
23° 4.320' 42° 27.863' 71			23° 5.013' 43° 27.890' 30			23° 25.443' 44° 04.2.035' 41			24° 15.582' 46° 4.222' 44			20° 23.468' 40° 7.479' 39			14° 9.917' 38° 55.153' 36			13° 8.062' 38° 33.981' 39			12° 35.395' 37° 57.817' 37			12° 5.275' 37° 31.674' 36		
23° 4.210' 42° 26.104' 71			23° 5.422' 43° 28.011' 40			23° 26.023' 44° 04.2.265' 41			24° 15.406' 46° 4.027' 45			20° 21.618' 40° 6.101' 39			14° 8.092' 38° 54.940' 31			13° 5.328' 38° 30.463' 34			12° 33.220' 37° 56.454' 37			12° 5.275' 37° 31.674' 36		
23° 3.983' 42° 14.120' 89			23° 5.766' 43° 28.216' 42			23° 29.969' 44° 04.4.778' 45			24° 3.490' 45° 50.282' 35			20° 21.226' 40° 5.771' 37			14° 7.748' 38° 54.829' 32			13° 4.184' 38° 29.088' 38			12° 32.965' 37° 56.311' 37			12° 5.275' 37° 31.674' 36		
23° 3.749' 42° 2.135' 96			23° 6.704' 43° 28.474' 44			23° 30.019' 44° 04.8.500' 45			24° 2.703' 45° 49.382' 35			20° 20.322' 40° 5.130' 37			14° 6.523' 38° 54.335' 32			13° 4.114' 38° 28.997' 39			12° 32.677' 37° 56.203' 36			12° 5.275' 37° 31.674' 36		
23° 3.736' 42° 1.519' 96			23° 6.931' 43° 28.467' 44			23° 31.926' 44° 04.6.200' 47			24° 2.378' 45° 49.005' 32			20° 18.610' 40° 3.846' 38			14° 6.421' 38° 54.318' 29			13° 3.432' 38° 28.631' 37			12° 32.331' 37° 56.027' 36			12° 5.275' 37° 31.674' 36		
23° 3.616' 41° 56.724' 89			23° 7.020' 43° 28.466' 45			23° 32.065' 44° 04.6.200' 47			23° 57.169' 45° 42.973' 32			20° 18.396' 40° 3.689' 36			14° 4.494' 38° 54.116' 29			13° 3.273' 38° 28.561' 36			12° 32.053' 37° 55.724' 38			12° 5.275' 37° 31.674' 36		
23° 3.463' 41° 56.154' 85			23° 7.053' 43° 28.466' 45			23° 33.825' 44° 04.7.352' 47			23° 53.681' 45° 38.941' 29			20° 15.920' 40° 2.000' 39			14° 3.954' 38° 53.986' 30			13° 2.828' 38° 28.282' 39			12° 31.797' 37° 55.384' 40			12° 5.275' 37° 31.674' 36		
23° 3.269' 41° 55.791' 82			23° 7.682' 43° 28.999' 47			23° 33.875' 44° 04.7.421' 47			23° 52.821' 45° 38.161' 27			20° 07.720' 39° 57.300' 46			14° 3.260' 38° 53.727' 29			13° 2.014' 38° 27.847' 32			12° 31.794' 37° 55.382' 40			12° 5.275' 37° 31.674' 36		
23° 2.908' 41° 55.360' 77			23° 8.026' 43° 29.187' 49			23° 41.303' 44° 52.120' 50			23° 52.456' 45° 37.813' 26			20° 04.303' 39° 55.084' 45			14° 2.223' 38° 53.330' 34			13° 1.832' 38° 27.820' 30			12° 30.912' 37° 54.561' 40			12° 5.275' 37° 31.674' 36		
23° 2.504' 41° 55.076' 72			23° 8.154' 43° 29.249' 49			23° 43.923' 44° 53.815' 52			23° 52.243' 45° 37.647' 25			20° 03.571' 39° 54.450' 44			14° 1.237' 38° 53.329' 36			13° 1.803' 38° 27.804' 30			12° 30.549' 37° 53.790' 44			12° 5.275' 37° 31.674' 36		
23° 1.163' 41° 54.439' 59			23° 8.315' 43° 29.487' 49			23° 47.861' 44° 58.117' 49			23° 50.123' 45° 36.417' 21			20° 02.320' 39° 53.805' 48			13° 59.608' 38° 52.868' 38			13° 1.907' 38° 27.792' 30			12° 30.248' 37° 53.392' 44			12° 5.275' 37° 31.674' 36		
22° 57.574' 41° 51.913' 56			23° 8.428' 43° 29.556' 49			23° 48.979' 44° 59.339' 47			23° 47.855' 45° 34.915' 14			19° 58.051' 39° 51.030' 49			13° 52.827' 38° 51.287' 42			13° 1.323' 38° 27.690' 22			12° 30.049' 37° 53.174' 43			12° 5.275' 37° 31.674' 36		
22° 55.510' 41° 50.461' 53			23° 8.522' 43° 29.691' 51			23° 51.424' 45° 2.016' 43			23° 47.785' 45° 34.859' 12			19° 56.721' 39° 50.307' 52			13° 51.868' 38° 51.177' 44			13° 1.274' 38° 27.711' 21			12° 29.883' 37° 52.882' 45			12° 5.275' 37° 31.674' 36		
22° 52.279' 41° 48.189' 52			23° 9.151' 43° 30.498' 50			23° 55.928' 45° 8.552' 40			Claro Segment 3N - WGS84			19° 54.211' 39° 48.540' 54			13° 50.587' 38° 50.653' 50			13° 1.237' 38° 27.723' 20			12° 29.360' 37° 52.234' 43			12° 5.275' 37° 31.674' 36		
22° 51.504' 41° 47.627' 53			23° 9.759' 43° 31.458' 52			23° 56.023' 45° 8.711' 38			Vila Velha - Grussai			19° 44.234' 39° 42.194' 40			13° 49.844' 38° 50.482' 54			13° 1.138' 38° 27.797' 15			12° 28.848' 37° 51.534' 43			12° 5.275' 37° 31.674' 36		
22° 50.674' 41° 47.110' 53			23° 10.053' 43° 32.170' 51			23° 56.571' 45° 9.302' 38			21° 40.434' 40° 59.450' 12			19° 40.282' 39° 39.580' 36			13° 47.671' 38° 50.144											