

If you suspect that you have fouled a submarine cable the following action should be taken:

1. If weights are excessive and you suspect you are fast to a cable, DO NOT endanger your vessel and crew by attempting to recover your gear.
2. Carefully plot your ships position as accurately as possible.
3. Seek immediate assistance.

If it is thought prudent to slip or cut one of both warps or bridles in an attempt to clear a cable from the fishing gear, always lower the gear to the seabed first. Never attempt to slip anything bearing excessive weight.



Segment 1 Cable Route (WGS84)

Segment 2 Cable Route (WGS84)

Segment 2a Cable Route (WGS84)

Latitude	Longitude	Depth (m)	Latitude	Longitude	Depth (m)	Latitude	Longitude	Depth (m)
18°26.370'N	064°38.920'W	-2	18°24.210'N	064°37.997'W	0	18°26.367'N	064°38.918'W	-2
18°26.370'N	064°38.920'W	-2	18°24.210'N	064°37.997'W	0	18°26.367'N	064°38.918'W	-2
18°26.382'N	064°38.922'W	-2	18°24.210'N	064°37.992'W	0	18°26.382'N	064°38.924'W	-2
18°26.389'N	064°38.924'W	-1	18°24.200'N	064°37.970'W	1	18°26.391'N	064°38.930'W	-1
18°26.395'N	064°38.928'W	-1	18°24.192'N	064°37.954'W	4	18°26.402'N	064°38.936'W	0
18°26.405'N	064°38.935'W	0	18°24.179'N	064°37.924'W	6	18°26.406'N	064°38.937'W	1
18°26.467'N	064°38.980'W	4	18°24.171'N	064°37.907'W	8	18°26.435'N	064°38.962'W	2
18°26.472'N	064°38.983'W	5	18°24.132'N	064°37.868'W	11	18°26.443'N	064°38.967'W	3
18°26.507'N	064°39.023'W	8	18°24.109'N	064°37.847'W	12	18°26.469'N	064°38.984'W	5
18°26.511'N	064°39.029'W	8	18°24.099'N	064°37.824'W	14	18°26.480'N	064°38.993'W	5
18°26.514'N	064°39.041'W	9	18°24.085'N	064°37.800'W	15	18°26.507'N	064°39.025'W	8
18°26.516'N	064°39.048'W	9	18°24.085'N	064°37.786'W	15	18°26.512'N	064°39.038'W	9
18°26.519'N	064°39.054'W	9	18°24.081'N	064°37.772'W	15	18°26.512'N	064°39.039'W	9
18°26.526'N	064°39.067'W	10	18°24.077'N	064°37.730'W	16	18°26.516'N	064°39.052'W	9
18°26.531'N	064°39.073'W	10	18°24.072'N	064°37.702'W	18	18°26.521'N	064°39.064'W	10
18°26.538'N	064°39.081'W	11	18°24.061'N	064°37.689'W	19	18°26.529'N	064°39.076'W	10
18°26.544'N	064°39.086'W	11	18°24.047'N	064°37.673'W	19	18°26.549'N	064°39.095'W	11
18°26.710'N	064°39.250'W	16	18°24.055'N	064°37.666'W	17	18°26.657'N	064°39.203'W	15
18°26.724'N	064°39.266'W	17	18°24.056'N	064°37.629'W	18	18°26.668'N	064°39.212'W	15
18°26.730'N	064°39.273'W	17	18°24.050'N	064°37.615'W	18	18°26.716'N	064°39.262'W	17
18°26.744'N	064°39.293'W	18	18°24.052'N	064°37.602'W	17	18°26.733'N	064°39.283'W	17
18°26.781'N	064°39.360'W	20	18°24.045'N	064°37.577'W	21	18°26.766'N	064°39.345'W	19
18°26.784'N	064°39.366'W	20	18°24.047'N	064°37.574'W	21	18°26.772'N	064°39.356'W	20
18°26.785'N	064°39.370'W	21	18°24.032'N	064°37.519'W	21	18°26.782'N	064°39.372'W	21
18°26.786'N	064°39.371'W	21	18°23.865'N	064°37.078'W	26	18°26.788'N	064°39.382'W	21
18°26.789'N	064°39.379'W	21	18°23.789'N	064°37.001'W	27	18°26.922'N	064°39.763'W	30
18°26.804'N	064°39.419'W	23	18°23.711'N	064°36.967'W	28	18°26.932'N	064°39.792'W	30
18°26.943'N	064°39.724'W	30	18°23.364'N	064°37.012'W	28	18°26.935'N	064°39.801'W	30
18°26.981'N	064°39.814'W	31	18°23.339'N	064°37.015'W	20	18°27.662'N	064°42.060'W	36
18°27.647'N	064°41.518'W	35	18°23.271'N	064°37.022'W	20	18°27.665'N	064°42.068'W	36
18°27.696'N	064°41.633'W	35	18°23.061'N	064°37.045'W	35	18°27.751'N	064°42.435'W	37
18°27.785'N	064°41.822'W	36	18°22.727'N	064°37.058'W	37	18°27.772'N	064°42.478'W	37
18°27.814'N	064°41.879'W	36	18°22.590'N	064°37.060'W	30	18°27.819'N	064°42.553'W	37
18°27.854'N	064°41.939'W	36	18°22.543'N	064°37.061'W	30	18°27.911'N	064°42.698'W	38
18°27.972'N	064°42.076'W	37	18°22.399'N	064°37.063'W	48	18°27.954'N	064°42.748'W	38
18°28.022'N	064°42.128'W	37	18°22.297'N	064°37.096'W	50	18°28.127'N	064°42.876'W	39

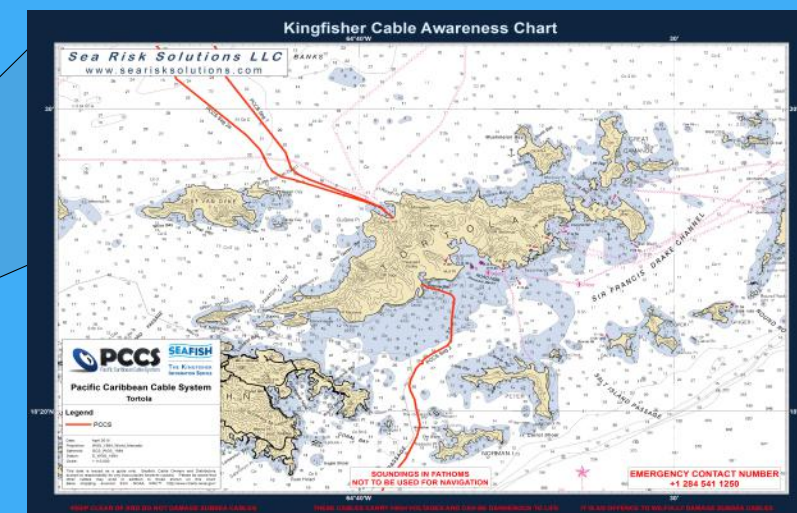


## New Pacific Caribbean Cable System (PCCS) in Tortola



Sea Risk Solutions LLC

www.searisksolutions.com



### Cable Information

#### Attention Mariners:

#### New Pacific Caribbean Cable System (PCCS) in Tortola

The Pacific Caribbean Cable System (PCCS) was recently installed in Florida, Tortola, Aruba, Colombia, Panama and Ecuador. This fiber optic submarine communications cable carries internet, telephone, fax, data and other communications. Cables carry more than 95% of international communications, with more capacity, speed, and security than satellites, but they may be damaged by anchors, fishing gear and other seabed activities.

The approximate route of this cable is shown on the attached chart and position list. Cables are essential to regional and global communication. They are protected by international law. Due to possible uncertainty in locations of marine operations, we ask mariners to keep anchors, fishing gear and other gear that may penetrate the seabed at least 1 mile away.

If your gear snags something that may be the cable, please do not try to lift it. That could cause risks to the vessel, crew and cable. Weight and tension of the cable could affect vessel stability, and cables carry up to 12,000 volts of electrical current.

A vessel owner who sacrifices his anchor or fishing gear to avoid damaging a cable may claim for compensation, if he has taken all reasonable care in advance to avoid damage and if he provides evidence of this sacrifice. However, if a person damages a cable intentionally or by culpable negligence, such damage is illegal and the responsible person may be liable for expensive repair costs.

In case of a suspected snag on this cable call the emergency number: +1 284 541 1250.

### Contact Details

LIME/Cable & Wireless BVI Ltd.  
TEC Building, Palestina Estate, Tortola VG1110  
Adrian Potter - adrian.potter@lime.com; Tel. +1 284 852 8735  
Dennis Waters - dwaters@columbus.co; Tel. +1 786 274 8818

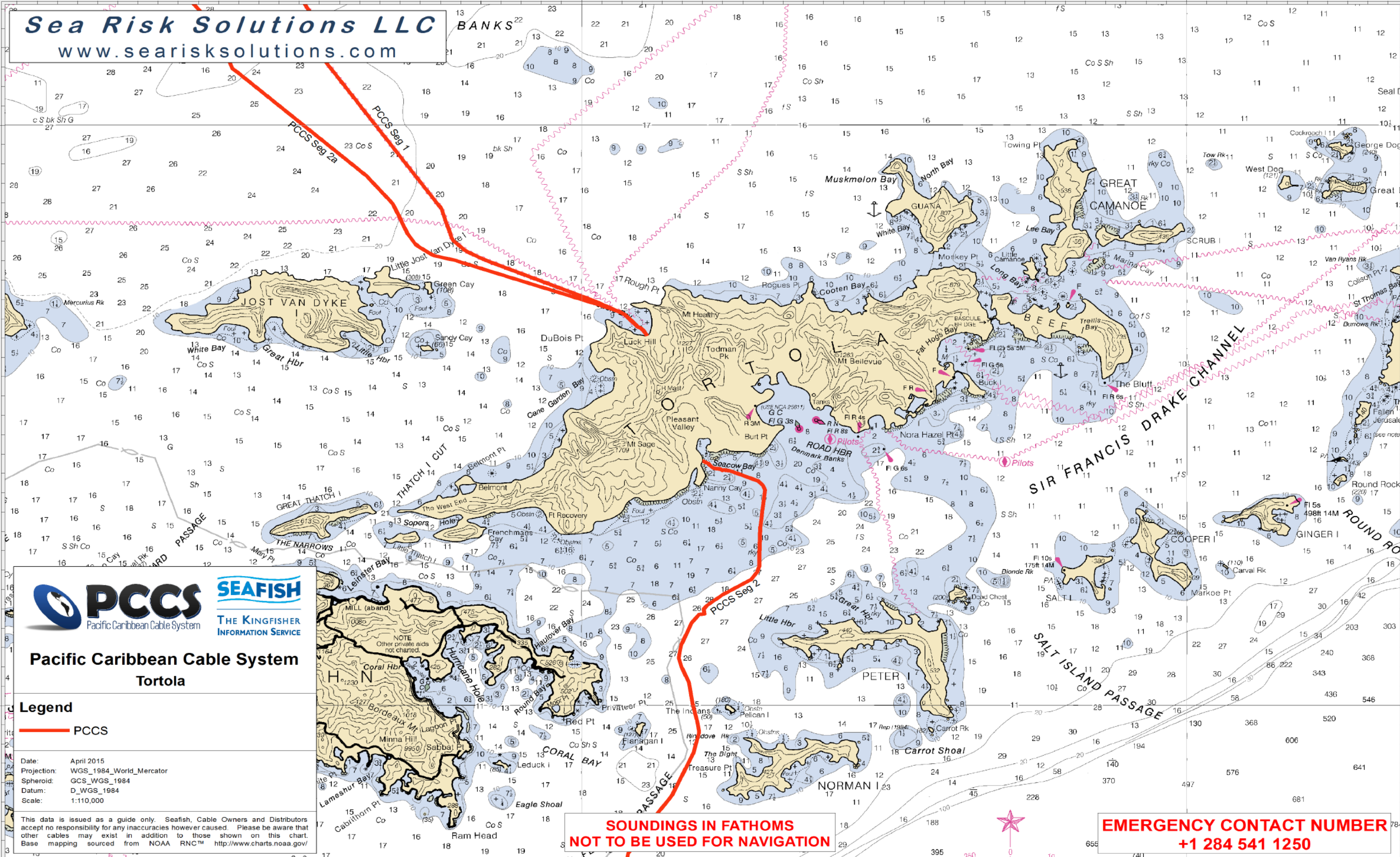
Sea Risk Solutions LLC  
New Jersey 08829 USA - www.searisksolutions.com  
Tel: +1 908 339 7439 / Fax: 908 462 8200

# Kingfisher Cable Awareness Chart

64°40'W

30'

**Sea Risk Solutions LLC**  
www.searisksolutions.com



**PCCCS** Pacific Caribbean Cable System  
**SEAFISH** THE KINGFISHER INFORMATION SERVICE

**Pacific Caribbean Cable System**  
Tortola

**Legend**  
— PCCS

Date: April 2015  
Projection: WGS\_1984\_World\_Mercator  
Spheroid: GCS\_WGS\_1984  
Datum: D\_WGS\_1984  
Scale: 1:110,000

This data is issued as a guide only. Seafish, Cable Owners and Distributors accept no responsibility for any inaccuracies however caused. Please be aware that other cables may exist in addition to those shown on this chart. Base mapping sourced from NOAA RNC™ <http://www.charts.noaa.gov/>

**SOUNDINGS IN FATHOMS**  
**NOT TO BE USED FOR NAVIGATION**

**EMERGENCY CONTACT NUMBER**  
**+1 284 541 1250**

64°40'W

30'

**KEEP CLEAR OF AND DO NOT DAMAGE SUBSEA CABLES**    **THESE CABLES CARRY HIGH VOLTAGES AND CAN BE DANGEROUS TO LIFE**    **IT IS AN OFFENCE TO WILFULLY DAMAGE SUBSEA CABLES**